

why

- preparation for careers in science and industry in the field of climate and environment
- development of analytical and problem solving skills

how

- structured and modular training
- competence and target group oriented qualification
- platform for international networking

whereby

- support by a reliable concept of supervision and quality control

who

- KIT-Center Climate and Environment, Cluster of excellent environmental expertise and infrastructure

Contact

Karlsruhe Institute of Technology (KIT)
KIT-Center Climate and Environment

Prof. Dr.-Ing. Stefan Hinz
GRACE Speaker

Dr.-Ing. Andreas Schenk
GRACE Coordinator

Campus Süd
Englerstraße 7 (Geb. 20.40)
76131 Karlsruhe

Fon: 0721 608 43676
Fax: 0721 608 48475
E-Mail: andreas.schenk@kit.edu

www.GRACE.kit.edu

Editor

Karlsruhe Institute of Technology (KIT)
KIT-Center Climate and Environment
Kaiserstraße 12 | 76131 Karlsruhe

Oktober 2015

www.kit.edu

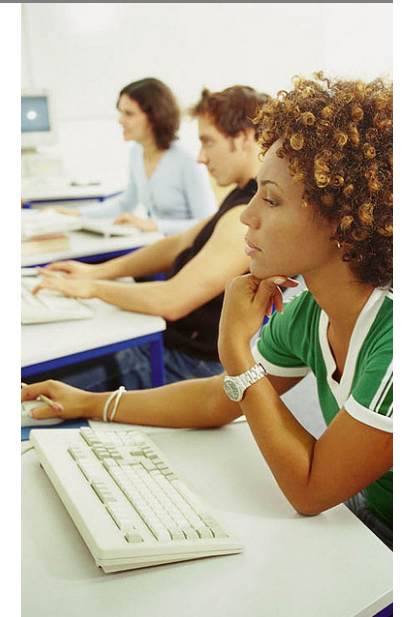
GRACE

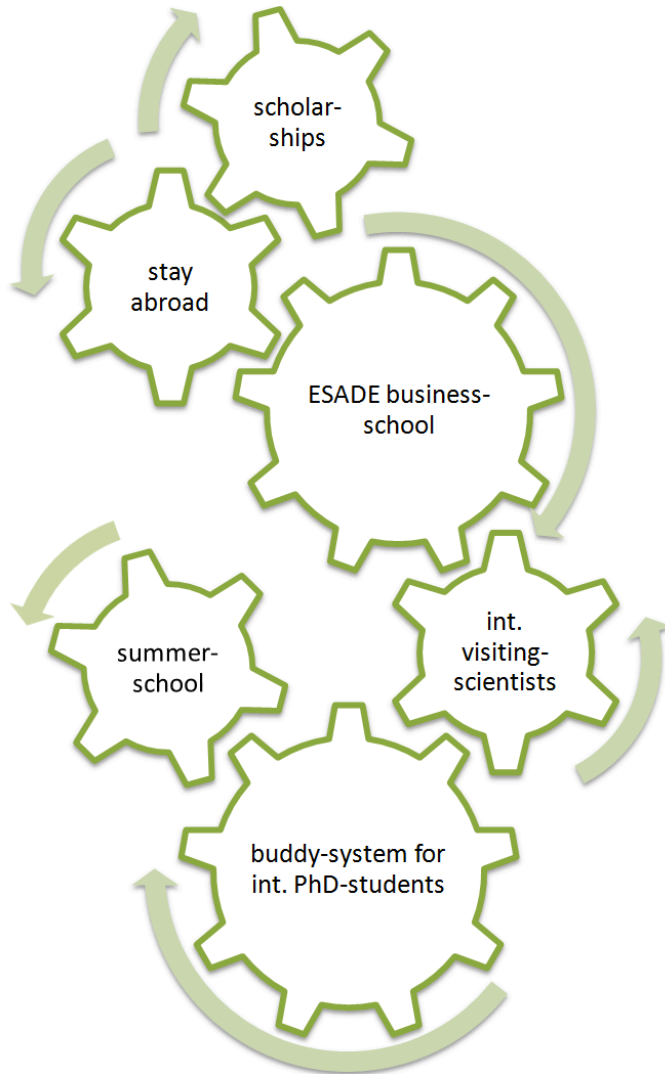
GRADuate school for Climate and Environment

Founded by  HELMHOLTZ
ASSOCIATION

KIT-Center Climate and Environment

KIT
GRACE





GRACE is the Graduate School for PhD students of the KIT-Center Climate and Environment at the Karlsruhe Institute of Technology (KIT).

It is the goal of GRACE to provide to its students not only highly specialized and interdisciplinary knowledge but also important key skill qualifications. In cooperation with the Technical University of Darmstadt and the ESADE Business School Barcelona a wide range of possibilities for study and research will be made available.

Due to the obtained qualifications and management knowledge the graduates of GRACE will be prepared optimally for a future career in the fields of science and business. Moreover they will be put in the position to be able to start a new business. Besides training students to cope with complex challenges in research and management GRACE is also going to encourage international networking. To achieve this task, trips abroad, summer schools or a block course in management at ESADE Business School Barcelona are going to be funded.

A personalized concept for each graduate is meant to guarantee appropriate assistance in obtaining a high quality qualification. Students will at all times get individual support from a personal steering group (PSG) composed for example of the research group leader and an advisor as well as a theme related tutor.

After completing the courses of GRACE graduates will be awarded certificates attesting the acquired qualifications and skills.

module	ECTS	1. year	2. year	3. year
topic related	4-6	introductory ¹		labratory
cross-cutting	4-6		advanced ¹	
competence skills	2-4	introductory ²	advanced ²	
stay abroad	-		scientific achievement	3 month

¹GRACE modules
² Modules of the House of Competence as well as the Fortbildungszentrum Umwelt und Technik