

GRACE in a Nutshell

Prof. Dr.-Ing. Stefan Hinz

KIT-GRACE - GRADuate school for Climate and Environment



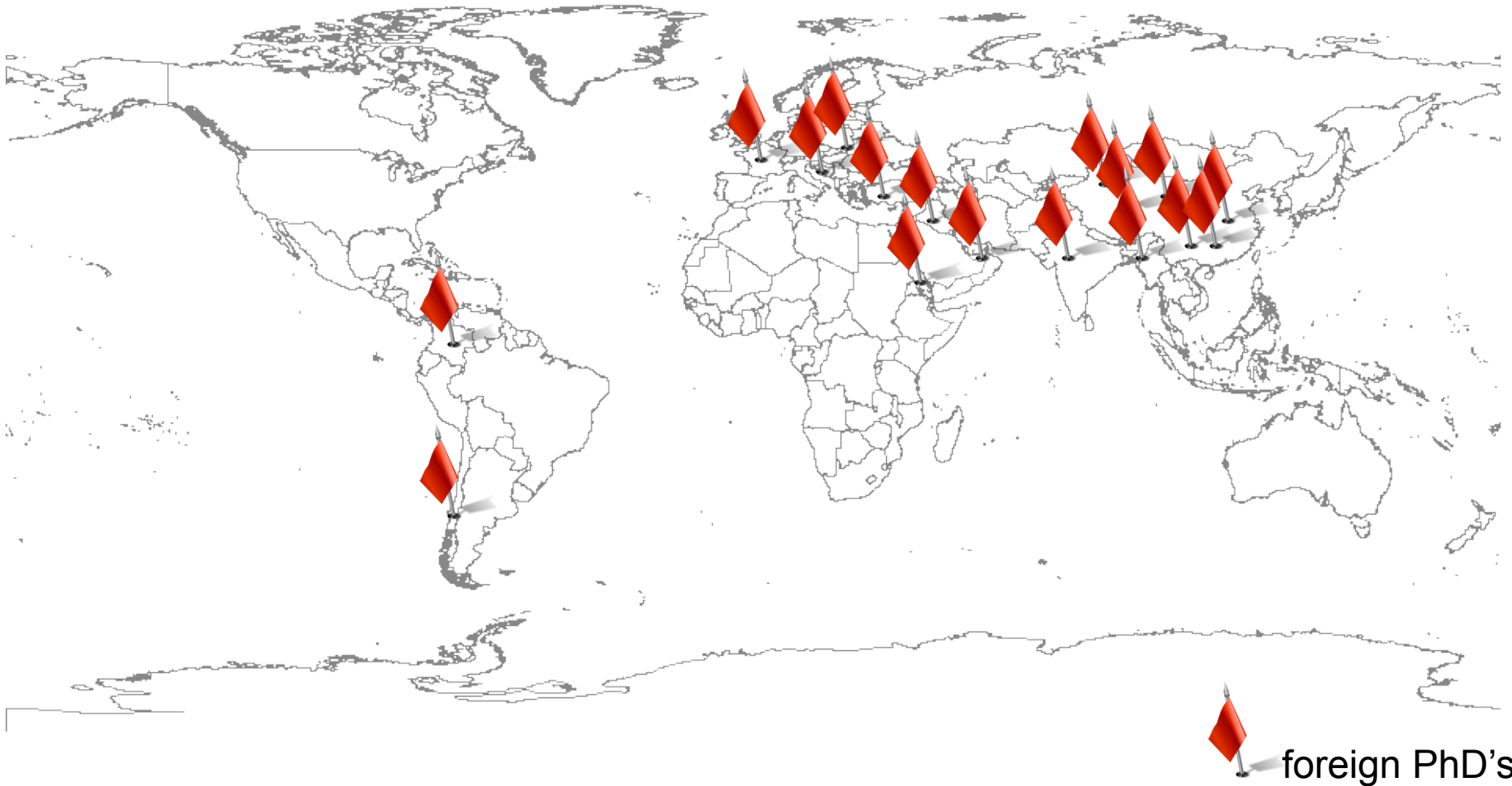
GRACE fellows

- 101 GRACE PhD's
 - 50 female

- 20 foreign PhD's

- Argentina – 1
- Azerbaijan – 1
- Bangladesh – 1
- Chile – 2
- China – 4
- Colombia – 2
- Eritrea – 1
- Iran – 1
- France – 2
- Hungaria – 1
- Poland – 1
- Romania – 1
- Turkey – 2

GRACE fellows



Funding – mobility program

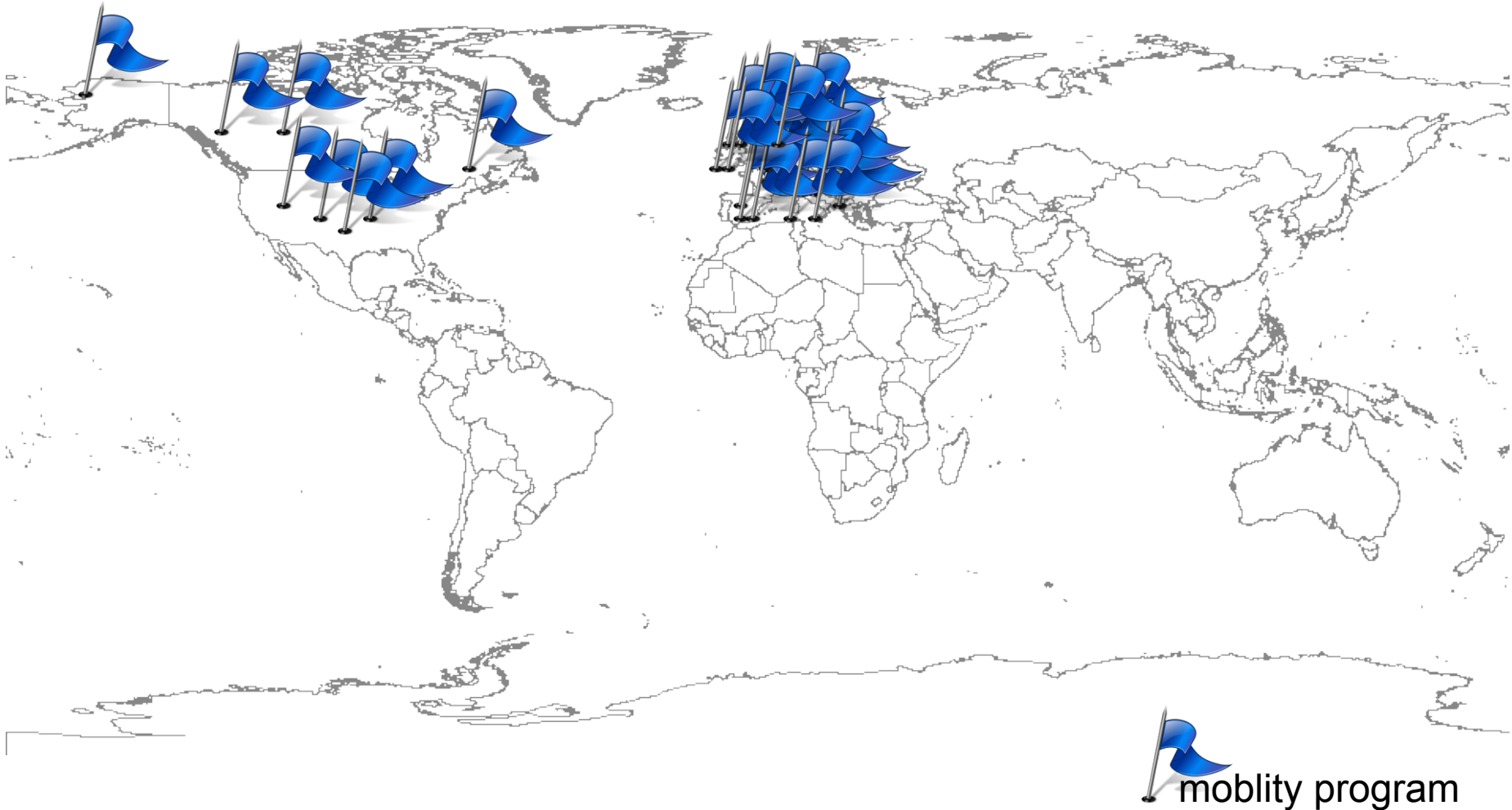
■ idea

- mobility for conferences as well as to cooperation institutes
- research visits to leading scientists

■ result

- 77 PhD's have visited summer schools, conferences, workshops and cooperating institutions

Funding – mobility program

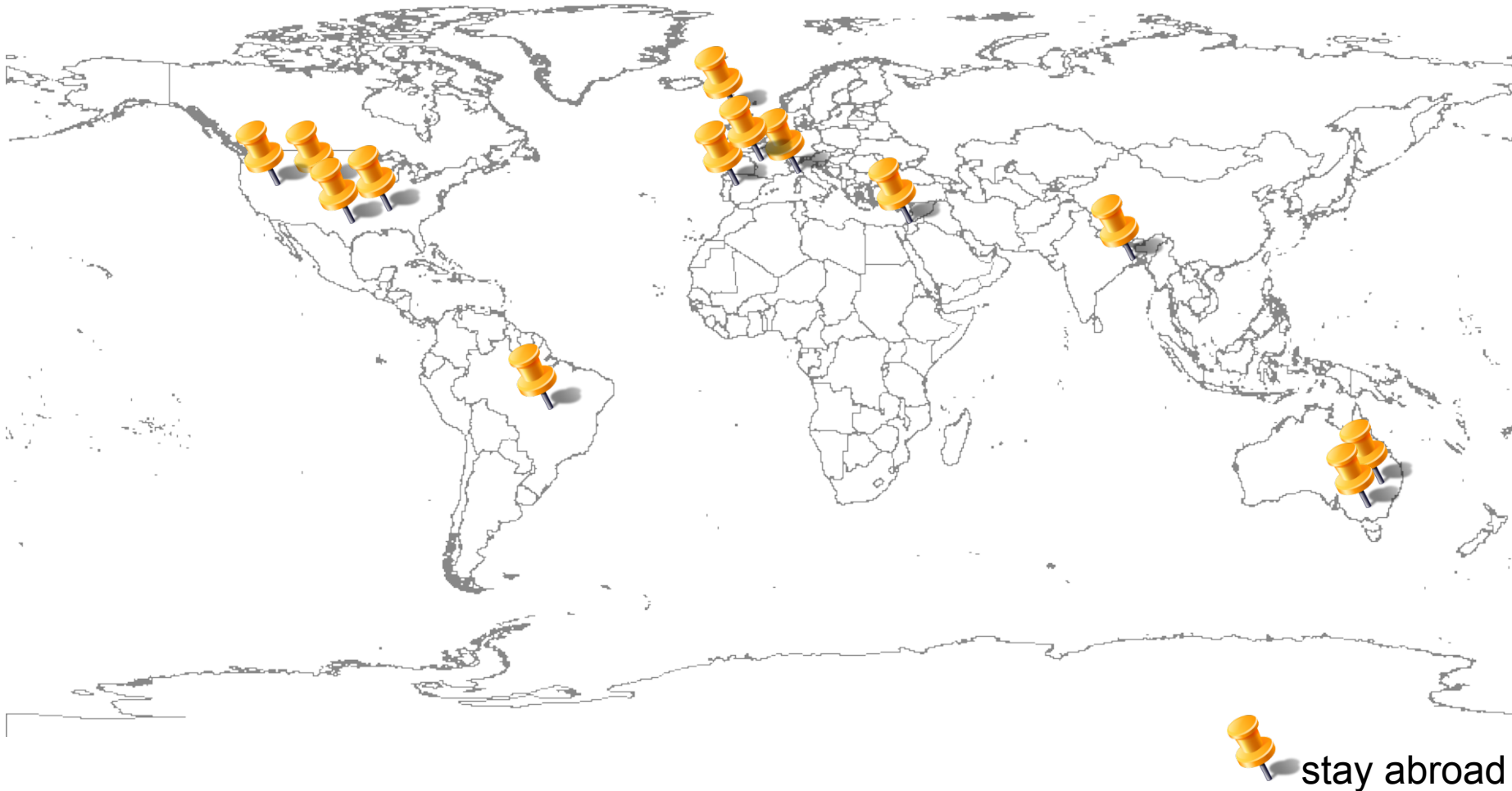


Funding – visiting research abroad

- idea
 - scholarships for 1 to 3 month
 - research visits
 - field studies
 - work in external laboratories

- result
 - 49 PhD's have been abroad

Funding – visiting research abroad



Funding – guest scientist program

- idea
 - invitation of international leading scientists
 - for a summer school or a block course

- result
 - leading scientists have visited the KIT
 - 12 technical short courses

Funding – summer schools

■ aim

- developing and organize summer schools, relating to your field of interest
- cooperation with other programs

■ result

- Basics of Environmental Science (every 2nd year)
- Linking School Bad Herrenalb
- Statistics School Freudenstadt
- DESERVE, ESADE

Funding – consumables

- idea
 - financing of consumables when needed by 3+ GRACE PhD's
 - teaching material
 - software, data....

- result
 - Financial support in five cases

Funding – scholarships

■ aim

- scholarships for excellent PhD-students
- strengthening of a GRACE-PhD-student group
- build a research group

■ result

- 29 scholarships were awarded including completion scholarships
- Currently 10 scholarships are running
- PhD research group (GRACE-Cluster)

Funding – overview

GRACE funding program for PhD students

- scholarships
- consumables
- summer school
- guest scientist program
- stay abroad
- mobility program

Funding – application

the steps to get a founding:

- write a proposal
 - core issue:
 - what is the thematic background ?
 - why the founding is necessary ?
 - where is the benefit ?
 - there are other possibilities for a founding?

- send it to the GRACE office

- wait for a decision

GRACE - organisation



Funded

by the Helmholtz Association (450.000 €/p.a.)

KIT-Center Climate and Environment

includes more than 33 institutes at 8 departments

Theme

climate and environmental research

Aim

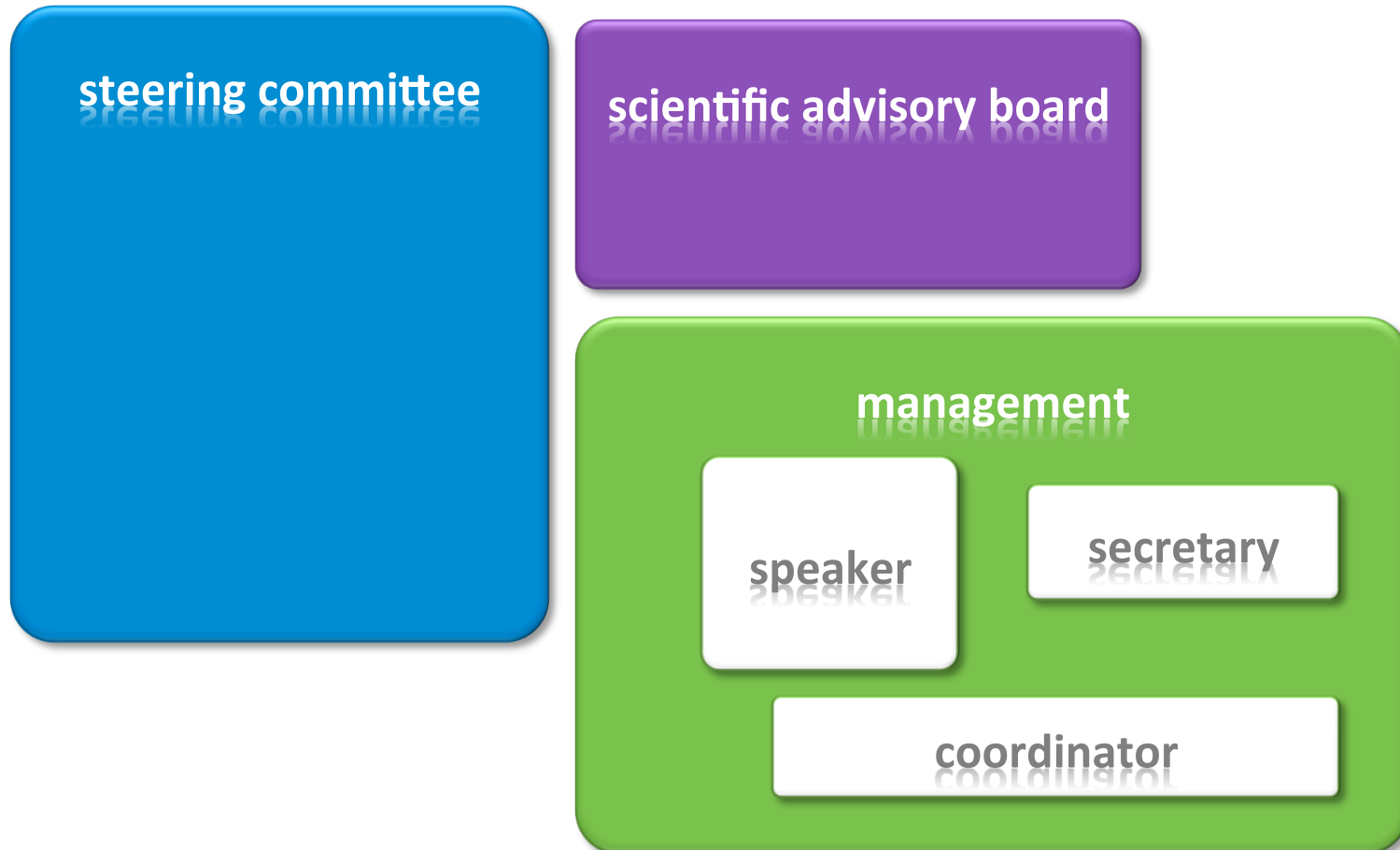
100 PhD-Students

structured PhD-training

by an interdisciplinary and systematic concept of qualification and graduation

GRACE - organisation

- the way to the decision



GRACE – qualification concept



**GRACE-
PhD-students**

GRACE – qualification concept



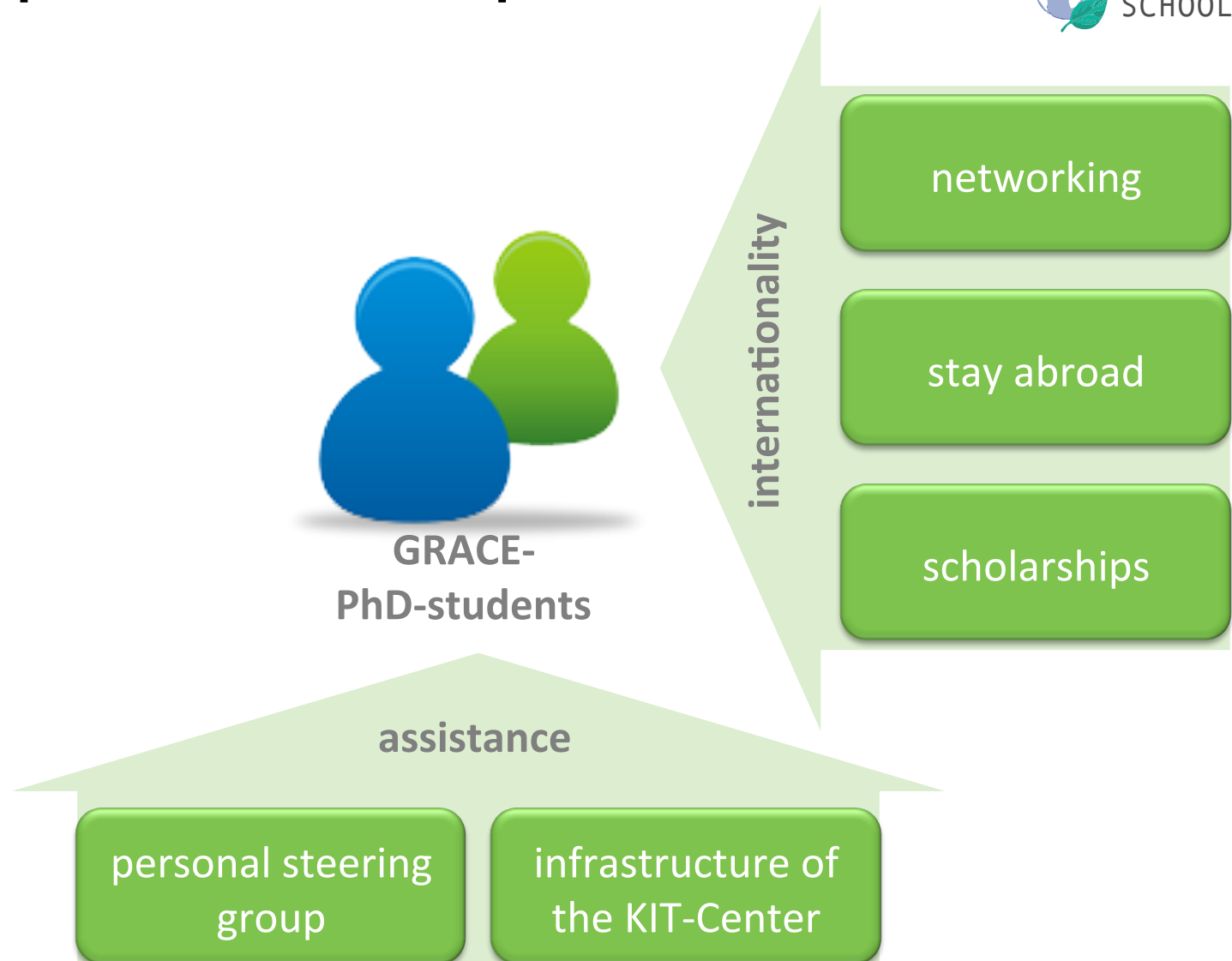
internationality

networking

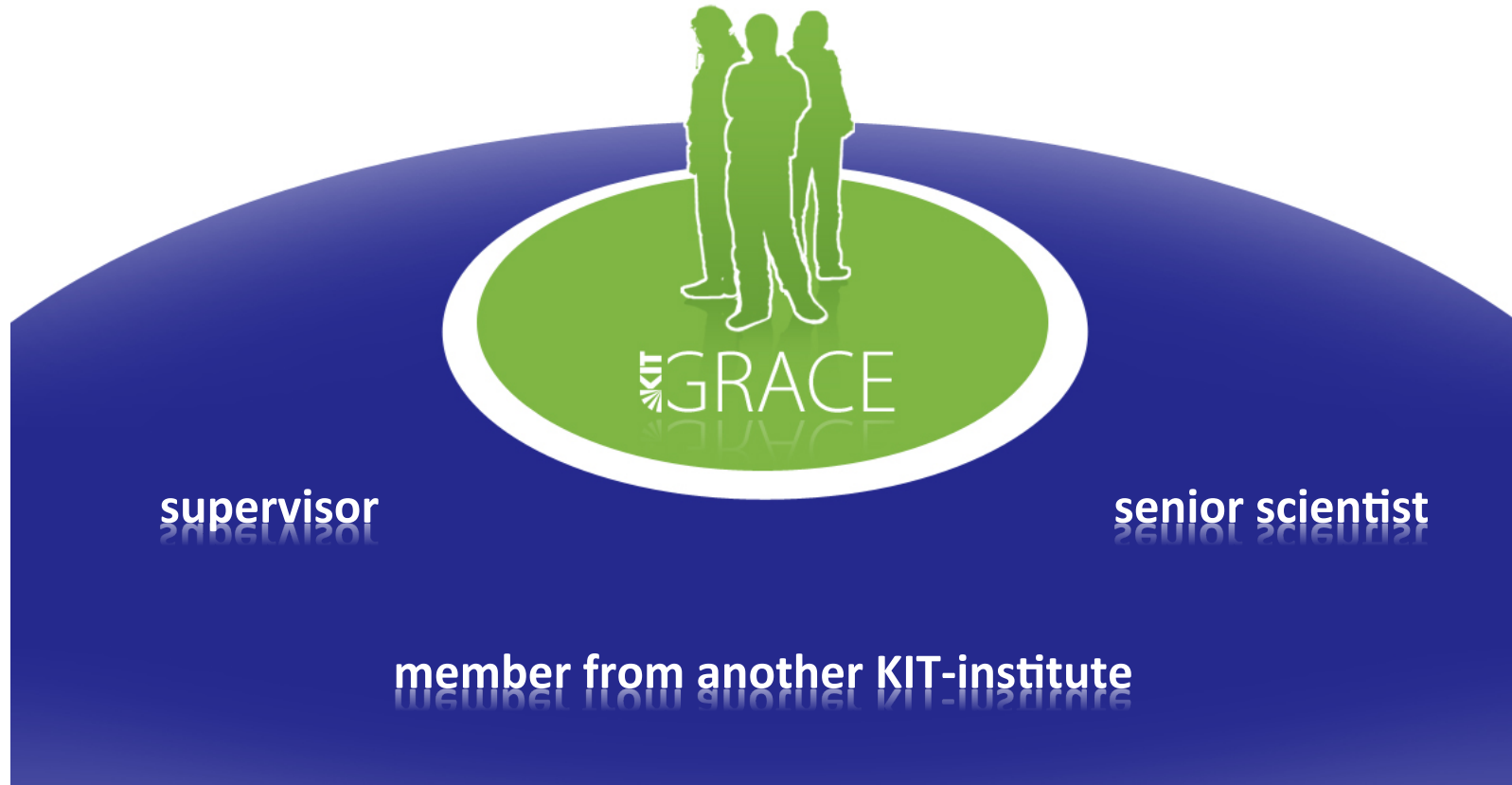
stay abroad

scholarships

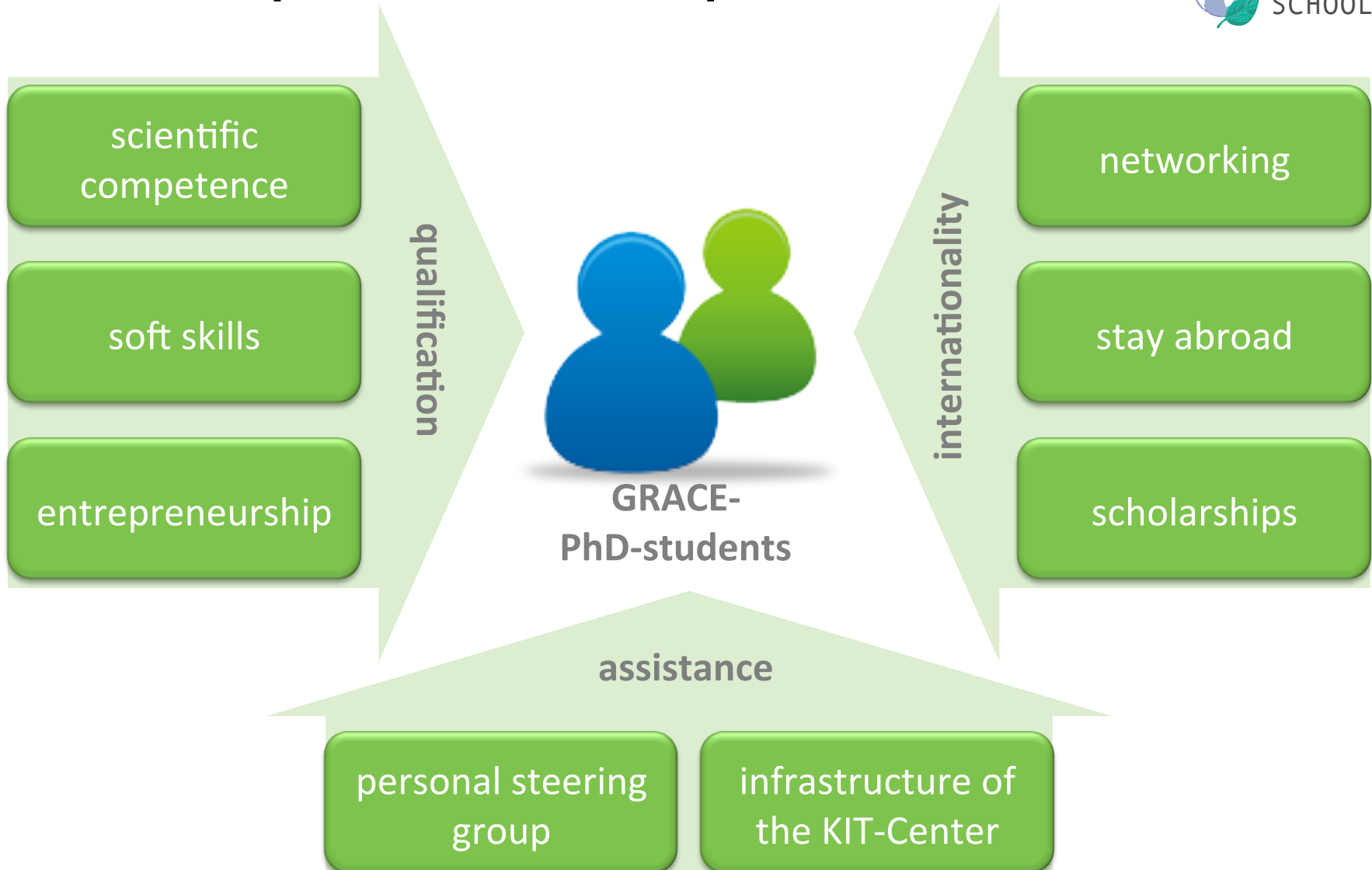
GRACE – qualification concept



assistance – personal steering group (psg)



GRACE – qualification concept



qualification – personal graduate plan

module	ECTS	1. year	2. year	3. year
topic related	4-6	introductory ¹		labratory
cross cutting	4-6			advanced ¹
competence skills	2-4	introductory ²	advanced ²	
		scientific achievement		
stay abroad	-	3 month		

¹GRACE modules, KIT lectures, SummerSchools

² Modules of PEW as well as of the FTU

GRACE



GRACE-PhD

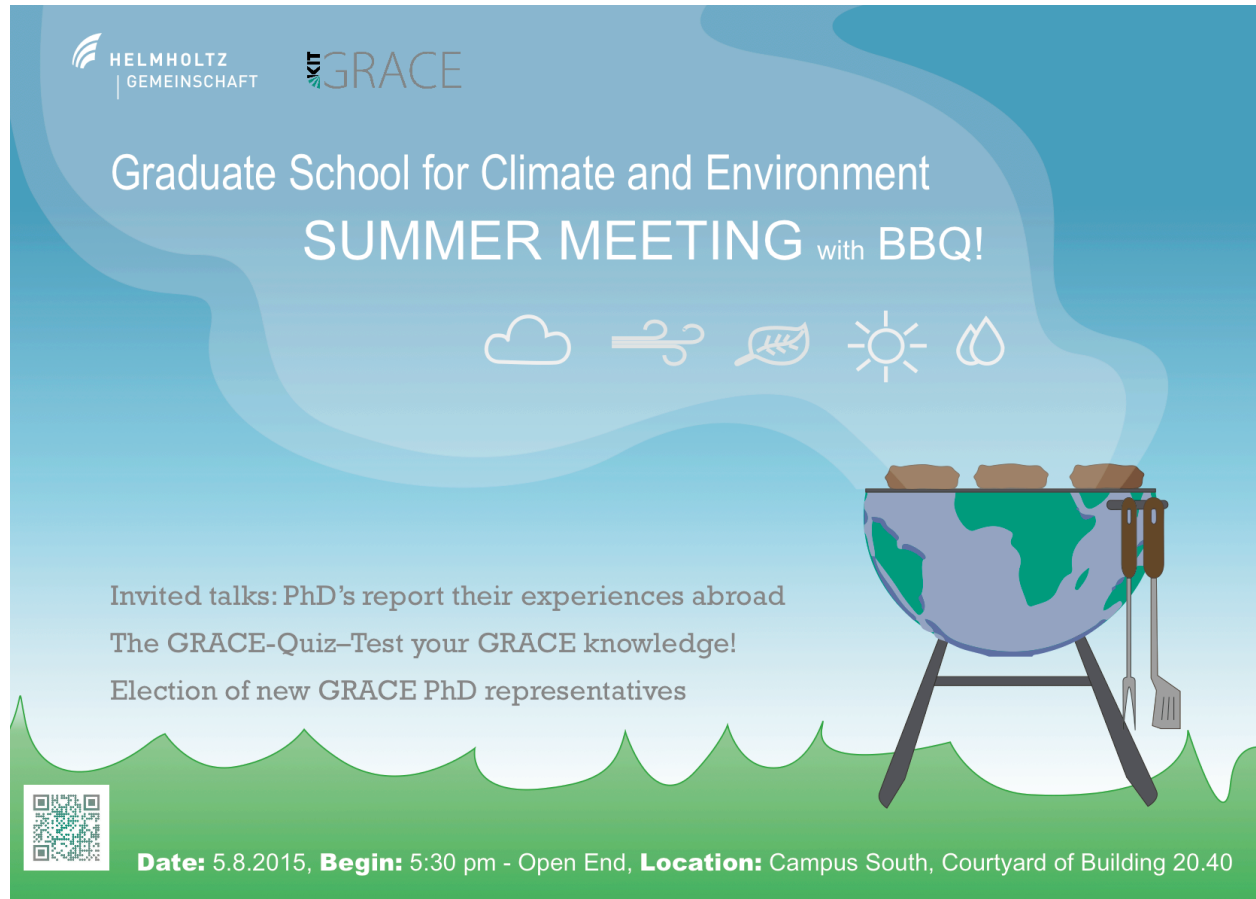
Upcoming – courses

- cross cutting
 - Block course „**advanced statistical methods for geoscientists with special focus on climatology**, University of Augsburg, 6.-9.10.2015
 - need for technical courses?
 - invite lecturers!

- competence skills
 - inhouse seminar „**conference presentation: engaging the listener in your talk**“, 12.-13.10.2015
 - inhouse seminar „**good scientific practice**“, 2.-3.11.2015

Upcoming

- GRACE assessment 24.9.2015
- BBQ 5.8.2015, election of GRACE representatives



HELMHOLTZ
GEMEINSCHAFT


GRACE

Graduate School for Climate and Environment
SUMMER MEETING with BBQ!

☁️ ✂️ 🌿 ☀️ 💧

Invited talks: PhD's report their experiences abroad
The GRACE-Quiz-Test your GRACE knowledge!
Election of new GRACE PhD representatives

Date: 5.8.2015, **Begin:** 5:30 pm - Open End, **Location:** Campus South, Courtyard of Building 20.40



The poster features a central illustration of a globe on a grill with food items, set against a blue sky with icons for weather and nature. The background is a light blue gradient with a green grassy bottom edge.

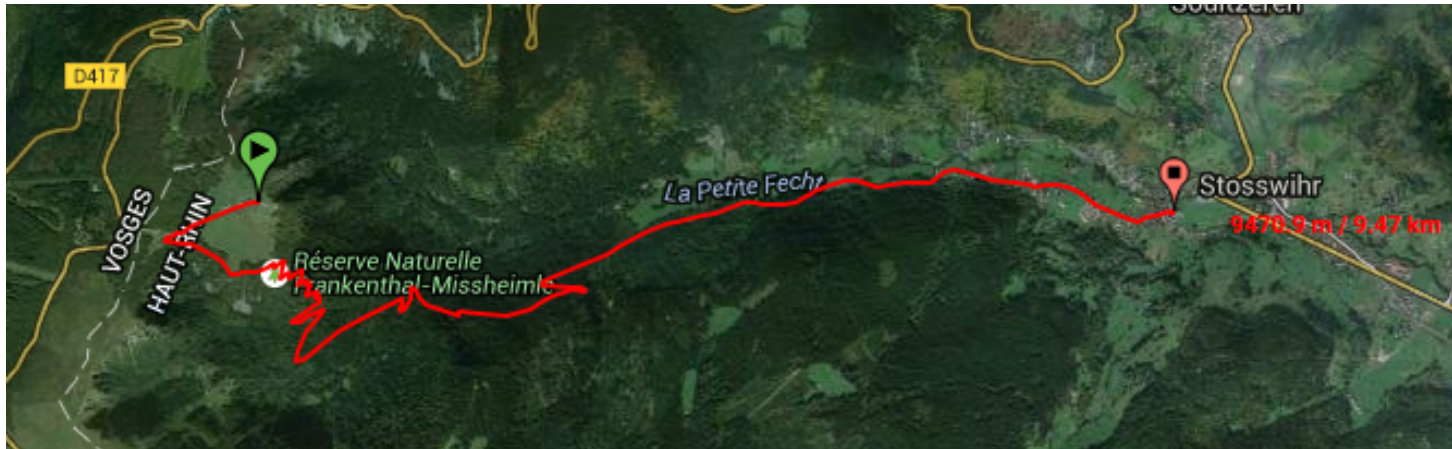
GRACE Autumn Hiking Tour (October 2 to 4, 2015)

- **Idea:** two-day hiking tour (low / medium difficulty) in the Vosges (Alsace)



- **Date:** October 2 (afternoon) to October 4 (evening), 2015
- **Transport:** by car, joint departure at KIT, Campus South by car
- **Destination:** Vosges (Alsace), topography similar to Black Forest
- **Accommodation:** October 2 to 3: guesthouse in Munster (Alsace)
October 3 to 4: cottage in the mountains

Planned Itinerary



2nd day

9.5 km

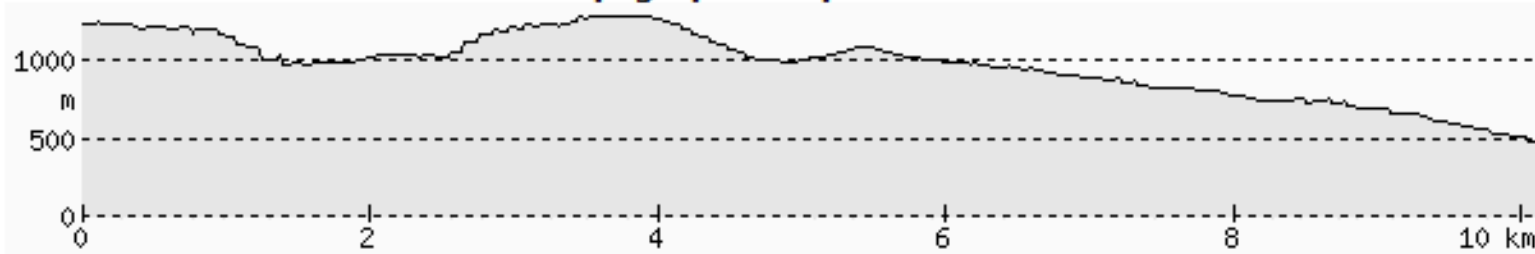


1st day

12.5 km

Planned Itinerary

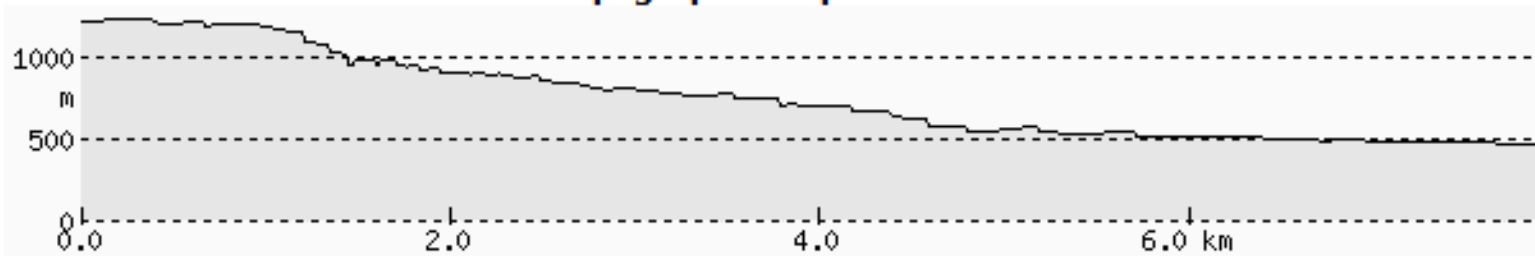
Topographie du parcours :



1st day

12.5 km

Topographie du parcours :



2nd day

9.5 km

Costs and Registration

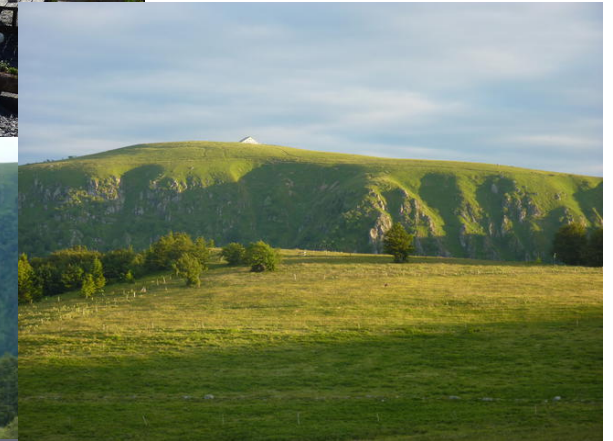
- Journey (forward and back) will be covered by GRACE
- Accommodation in Munster: about 30 € per person + dinner
- Cottage: about 15 € per person + 21 € for dinner + breakfast
- Visit of the cheese factory: about 9 €

- All in all: **75 € + Friday evening's dinner**

- **More information:** on August 5, 2015 at Ph.D. barbecue
(Fakultät Bau-Geo-Umwelt)

- **Registration:** until August 15, 2015

Refuge des Trois Fours



Cheese factory



Friday, 24 July

8:00 - 9:30	T5: Urban Systems and Material Flow Management	Dr. Suppan
09:45 - 11:15	T6: Natural Hazards and Risk Management	Dr. Kunz
11:30 - 12:15	Final Discussion & Feedback	Prof. Hinz
12:15 - 13:15	Lunch	